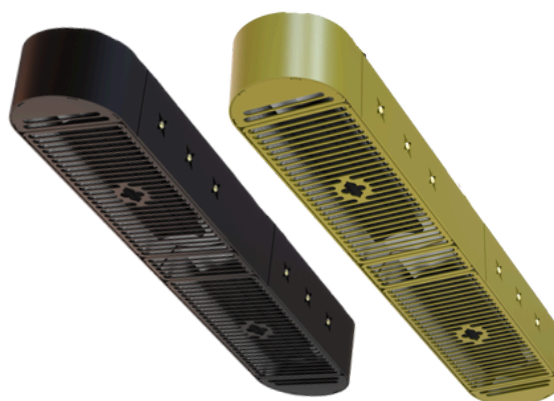


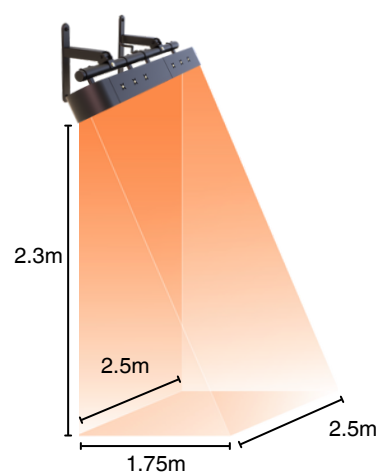
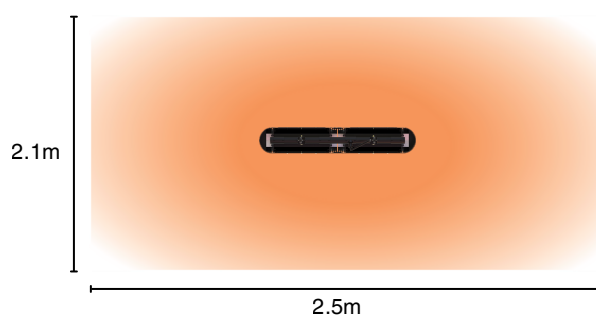
SHADOW SOLACE 16

The Shadow Solace by Shadow Industrial is a groundbreaking infrared heating solution that mirrors the performance of the Shadow Chandelier in a refined, linear form. Designed for spaces that require discreet yet powerful heating, the Solace provides exceptional warmth while blending seamlessly into its surroundings.

- 01 Efficient Heating Power:** With two high-performance emitters delivering a total of 1.6 kW, the Solace 16 creates a cosy environment, perfect for spaces that need reliable, consistent heat without distraction.
- 02 Understated Elegance:** Finished in RAL1036 premium powder coat, the unit is designed for easy installation in historic interiors, with the option to wall mount or suspend from the ceiling.
- 03 Zero-Light Ceramic Technology:** Provides efficient warmth without visible light, preserving your space's visual ambiance and historic charm.
- 04 Flexible Mounting:** The Solace 16 can be wall or ceiling mounted, making it adaptable to suit a wide range of spaces and layouts.



HEAT SPREAD



Dimension (H) mm	Dimension (W) mm	Dimension (D) mm	Coverage (M sq.)	Phase Supply	Emitters	Total Power (kW)	Voltage (V)	Rec. height from floor (m)	Min. Distance from side wall (mm)	Weight (kg)
130	750	120	5.25	Single	2 x 800	1.6	240	2.3	500	5.5